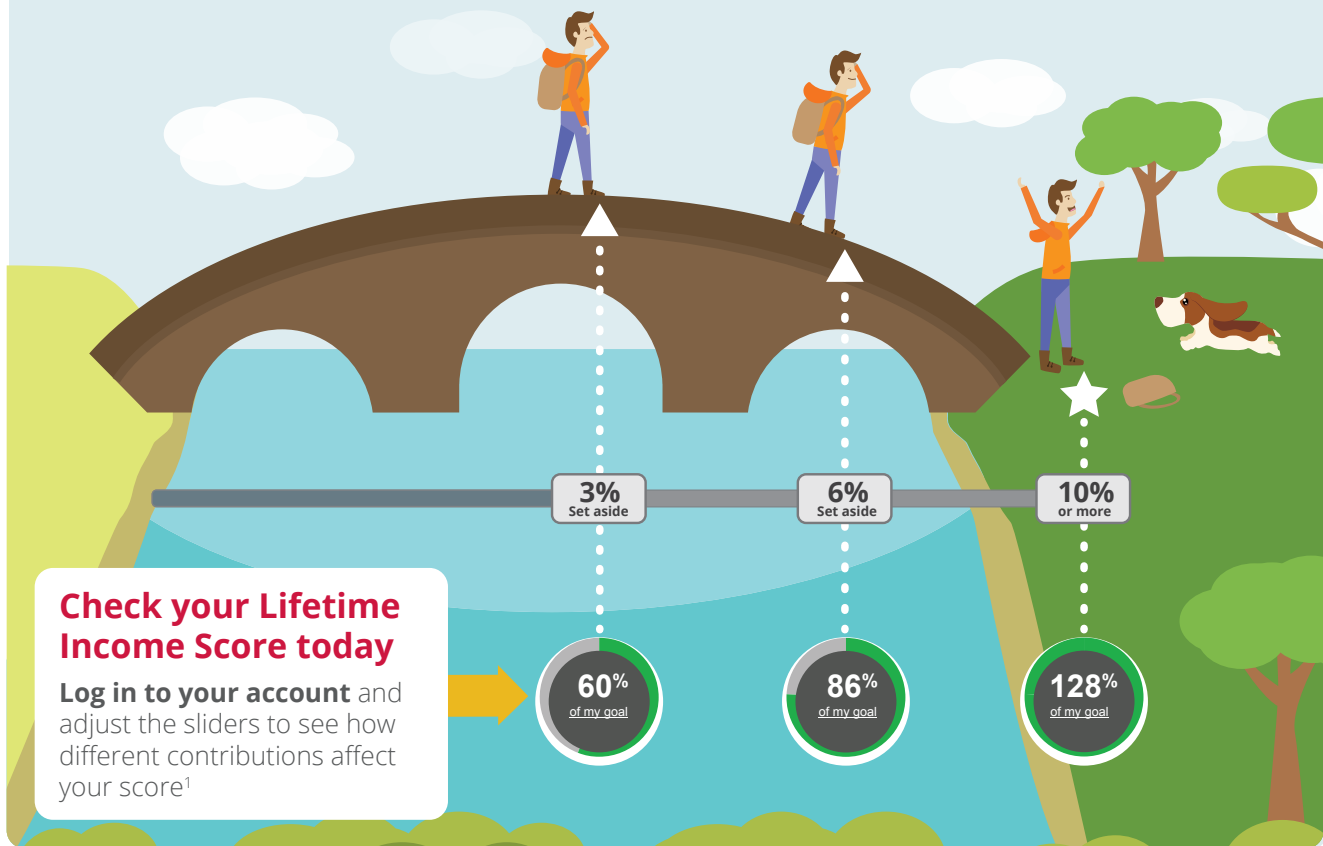


SAVING

One score tells it all

See where you stand on the bridge of retirement

Your **Lifetime Income ScoreSM** helps you see if you're on track to work toward achieving your financial goals in retirement. The closer your score is to 100%, the closer you may be to your target monthly or annual retirement income.



FOR ILLUSTRATIVE PURPOSES ONLY. Empower Institute, Scoring the Progress of Retirement Savers, April 2018. The Empower Institute is brought to you by Empower Retirement and critically examines investment theories, retirement strategies and assumptions. It suggests theories and changes for achieving better outcomes for employers, institutions, financial advisors and individual investors. The estimates include projected Social Security benefits (if available), defined benefit and defined contribution assets, personal savings, home equity and business ownership.

¹ IMPORTANT: The projections, or other information generated on the website by the investment analysis tool regarding the likelihood of various investment outcomes, are hypothetical in nature, do not reflect actual investment results and are not guarantees of future results. The results may vary with each use and over time. Healthcare costs and projections, if applicable, are provided by HealthView Services. HealthView Services is not affiliated with GWFS Equities, Inc. Empower Retirement does not provide healthcare advice. A top peer is defined as an individual who is at the 90th percentile of the selected age band, salary range and gender.

Securities offered or distributed through GWFS Equities, Inc., Member FINRA/SIPC and a subsidiary of Great-West Life & Annuity Insurance Company.

This material has been prepared for informational and educational purposes only and is not intended to provide investment, legal or tax advice.

Great-West Financial®, Empower Retirement and Great-West Investments™ are the marketing names of Great-West Life & Annuity Insurance Company, Corporate Headquarters: Greenwood Village, CO; Great-West Life & Annuity Insurance Company of New York, Home Office: New York, NY; and their subsidiaries and affiliates, including registered investment advisers Advised Assets Group, LLC and Great-West Capital Management, LLC.

©2018 Great-West Life & Annuity Insurance Company. All rights reserved. ERMKT-OTH-2741-1807 AMAM523080-0818

NOW IS A GOOD TIME

Get your score

